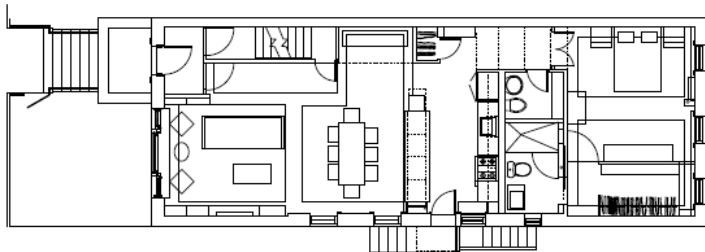


ASTORIA PARK RESIDENCE

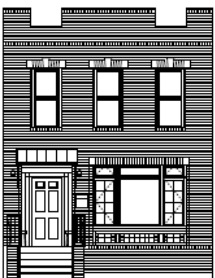
ASTORIA, NY



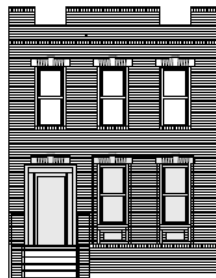
This Astoria two family row house renovation involved the complete redesign of the first floor and cellar. Located on Astoria Park, the house had the potential for dramatic views and light. Many of the interior partitions were removed from the front of the house to create a loft like living space filled with light. The new kitchen has a custom designed back lit light box which provides ambiance for evening tango dancing events which the owners hosts. The two bedrooms in the rear where combined to provide a generous master bedroom with walk in closet and master bath. The framed opening of the front elevation with a custom picture window provides views to the Hell Gate Bridge.



PLAN



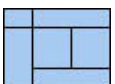
NEW FACADE



EXISTING FACADE



Type: Residential Renovation
 Program: Apartment (2 Family)
 Area: 2200 SF
 Status: Completed 2009
 Awards: Queens Bronx Building Association Award 2009



Laura Heim Architect PLLC

www.heimarchitect.com