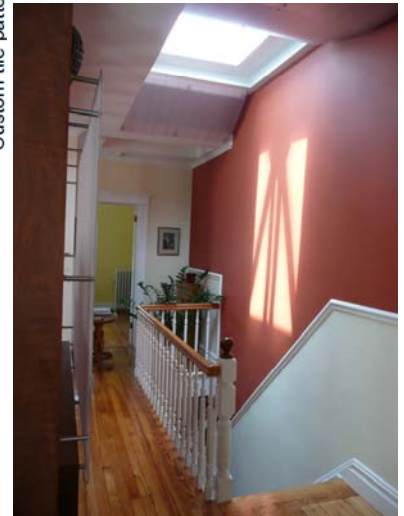


ASTORIA ROW HOUSE RENOVATION

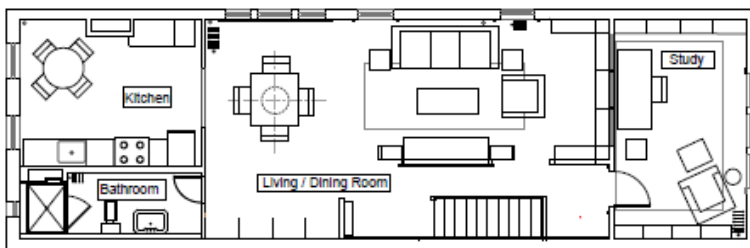
ASTORIA, NY



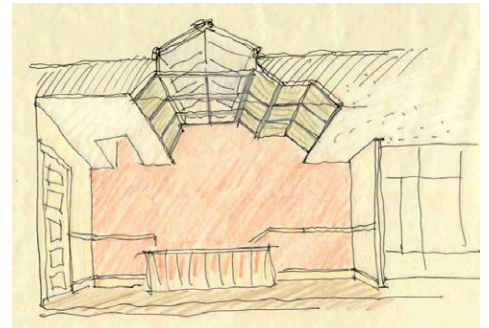
Custom tile pattern inspired by clients' interlocked initials



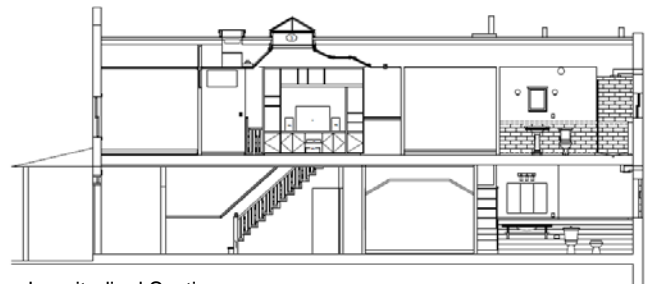
The owners of this two-family row house, located in a traditional 1920's Astoria neighborhood, wanted to lighten and open the plan of the house while preserving many of the historical elements. The design simultaneously respects the existing conditions while introducing new conceptual ideas, creating a dialogue between old and new. A cascading folded plane skylight, carved out of the thick ceiling increases the spread of light and illuminates the stairwell and entry below. Special attention was paid to transforming the living and dining areas into an open, loft-like space defined by a custom cabinetry screen. A period black and white bathroom and a modern limestone bathroom were designed with utmost attention to details and materials. Phase II involved designing a new kitchen emphasizing recycled and renewable materials. The scheme dramatically creates a more spacious and light living environment.



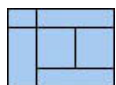
Second Floor Plan



First Floor Plan



Longitudinal Section



Laura Heim Architect PLLC

www.heimarchitect.com

Type: Residential Interior Renovation
 Program: Row House
 Area: 2000 SF
 Status: 2008 Phase I, 2010 Phase II
 Awards: Queens Chamber of Commerce- First Prize Design 2008
 Queens and Bronx Building Association Award 2008