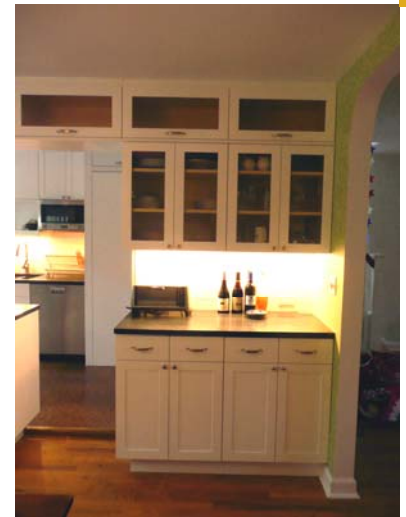
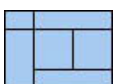
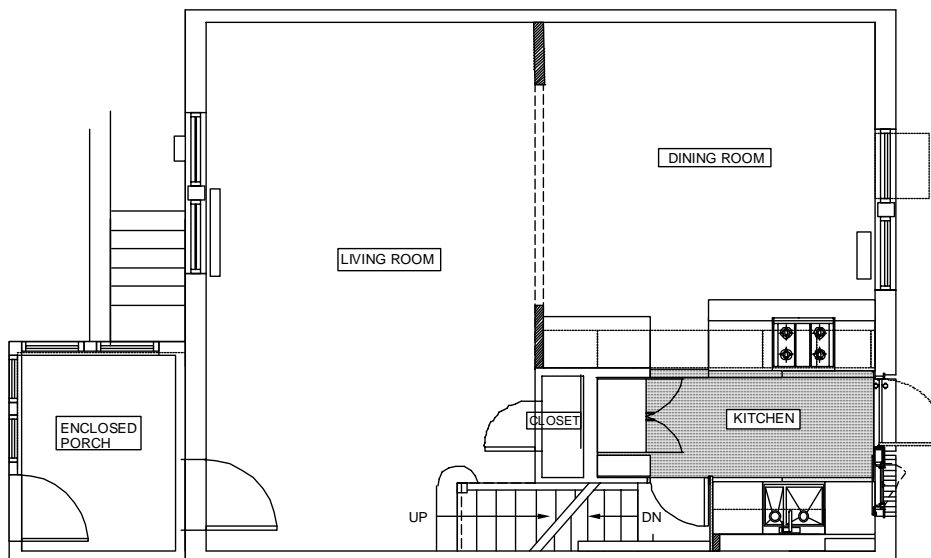


# ROOSEVELT COURT KITCHEN

SUNNYSIDE GARDENS, NY



Located in historic Sunnyside Gardens, this kitchen renovation involved opening the existing original compartmentalized kitchen to the adjacent dining room area. The unusual width of the row house provided the opportunity to create a new unified cabinet elevation facing the dining area with an additional built in storage and a glass china display case. The use of natural materials including the black Concordia stone counter top and dark brown cork flooring together with the original oak hardwood floors adds warmth to the space. While a traditional black and white kitchen, the details and design create a modern interpretation suited to this historic house.



**Laura Heim Architect PLLC**

[www.heimarchitect.com](http://www.heimarchitect.com)

Type: Residential Interior Renovation  
Program: Kitchen & Dining Room  
Area: 310 SF  
Status: Completed Spring 2009