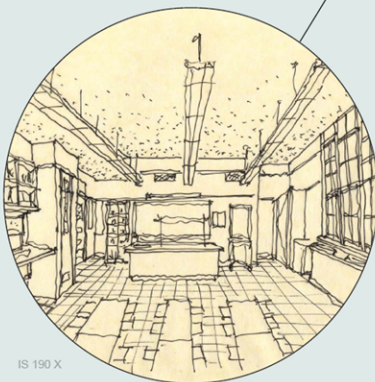
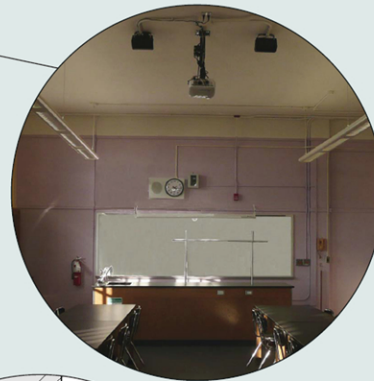


SCIENCE LAB CLASSROOMS

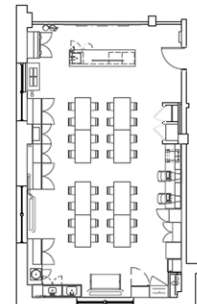
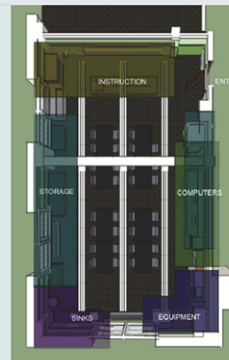
NYC PUBLIC SCHOOLS



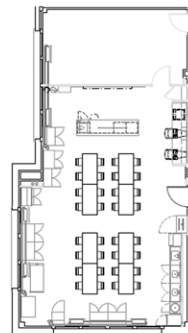
The NYC School Construction Authority has been undertaking an installation of new science lab classrooms in elementary, intermediate and high schools across the city. Laura Heim Architect was approached by Chu & Gassman engineers to be the architectural subconsultant for four classrooms in the Bronx and Queens (PS116Q, IS286X, IS190X and HS792Q). The design involved developing a new prototypical lab which combines prep space and demonstration space into the same classroom. The diagram which evolved led to a quadrant scheme which typically had an area for instruction, computers, equipment / sinks and storage. Two of the labs have been completed and two begin construction in the summer of 2009.

Given the extent of plumbing required to install the science lab for PS116Q, the school then approached the team about completing a library renovation driven by the desire to conceal the new piping in the ceiling. The challenge provided the opportunity to sculpt the ceiling to retain maximum light from the existing tall windows while also maintaining the perception of the height of the ceiling. A stepped soffit ceiling allowed the existing lighting fixtures to remain and gave the ceiling a new dramatic presence.

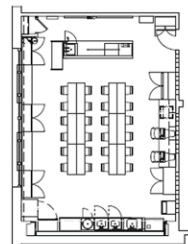
Type: Education; Interior Renovation
Program: Classrooms
Client: Chu & Gassman Prime, SCA
Area: 1000 SF each, typical lab
Status: PS116Q & IS286X Completed May 2009
IS190X, HS792Q Completion Fall 2009



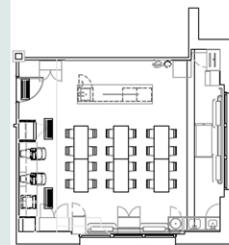
PS 116 Q



IS 286 X



HS 792 Q



IS 190 X



Laura Heim Architect PLLC

41-03 46th Street Sunnyside, New York 11104

tel 718.360.4959 fax 718.554.0549

laura@heimarchitect.com

www.heimarchitect.com